

D LUM Installation Manual

Product Description:

D LUM GEN 4 luminaire is a stylish and powerful downlight, providing comfortable, quality illumination, with low UGR and easy installation. It is designed for public rooms and areas, stairways, corridors, foyers and shops. With 5 years warranty.



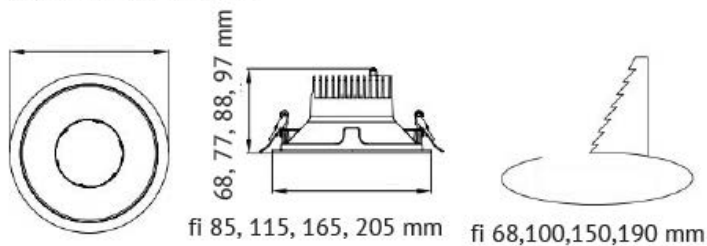
Product Specification:

	D LUM GEN 4			
Supply voltage	220-240 VAC			
System efficacy	136 lm/W	132 lm/W	135 lm/W	130 lm/W
Power	6 W	10 W	14 W	20 W
Luminous flux	816 lm	1320 lm	1890 lm	2600 lm
Weight	0.2 kg	0.3 kg	0.5 kg	0.8 kg
Power factor	> 0.9			
Lifetime L80B10	> 50,000 h			
CCT	4000 K; other upon request			
CRI	90			
Ingress protection	IP 44			
Operating temperature	-20 °C to +35 °C			
Remote control options	DALI (optional)			
Colour	White, Black			
Housing material	Aluminium			
Warranty	5 years			
Certificates	CE			



Dimensions:

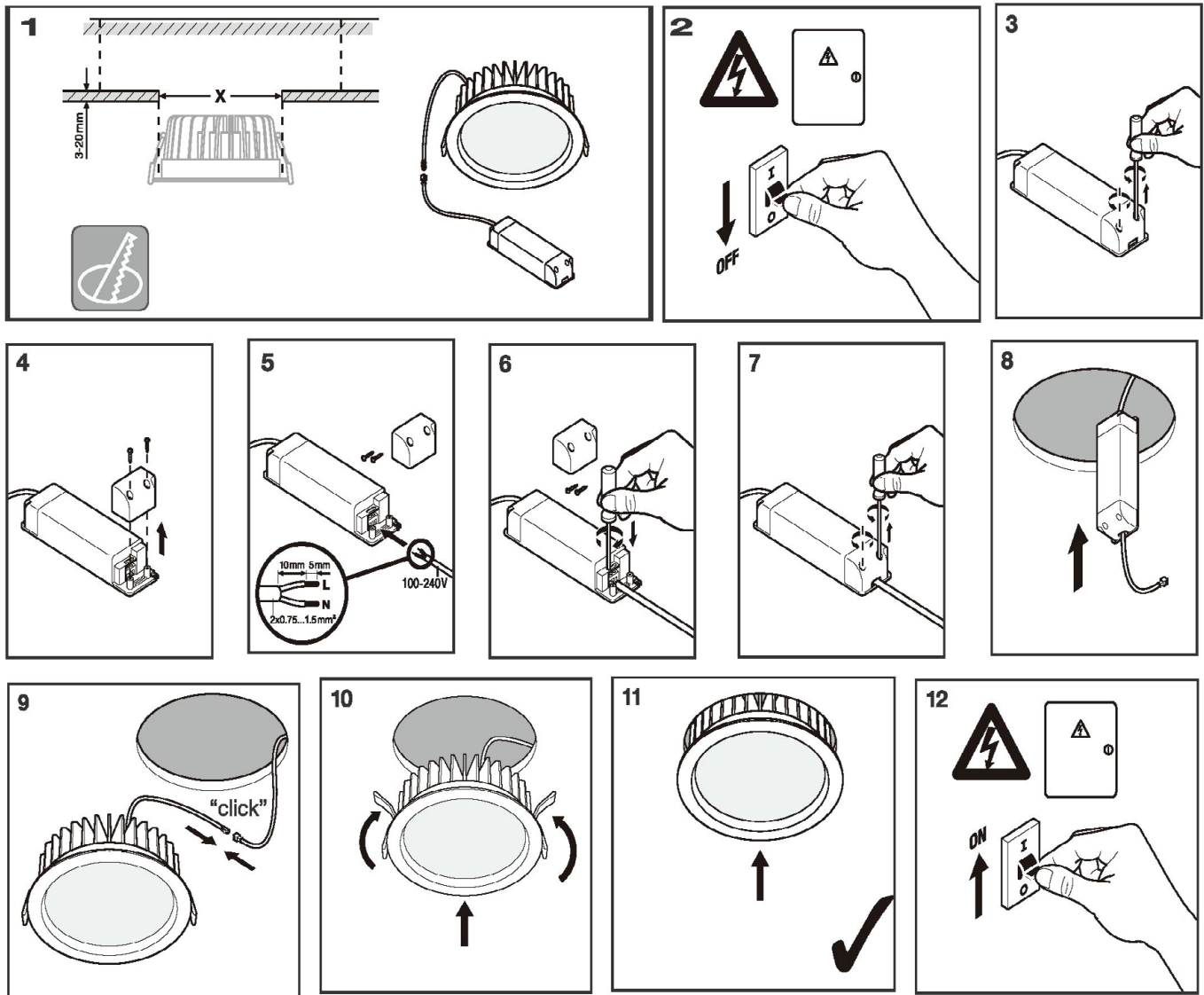
Recessed mounting $\Phi 85 / 115 / 165 / 205$ mm



Warranty:

This product has a warranty period of 5 Years. Warranties may be available on certain products as indicated in the product description. Warranties are valid from the date of purchase. The warranty is invalid in the case of improper use, installation, tampering, removal of the Q.C. date label or installation in an improper working environment or installation. Should this product fail during the warranty period it will be replaced free of charge, subject to the correct installation of the original product and subsequent return of the faulty unit.

Installation:



Things to know:

- Due to the different Voltage of lighting fixture, please select the appropriate. LED driver based upon the technical specification.
- Installation must be done by professional electrician.
- Please ensure the power has been cut off before installation, in order to prevent the electric shock, make sure the power supply that can't be resumed by anybody before the job done.
- This product should be installed together with fuse..The maintenance should be done by the professional.
- The defective ballast could not be treated as the normal rubbish and should be returned and make use of the normal parts.
- Please consult the authorized department or retailers for returned advice.